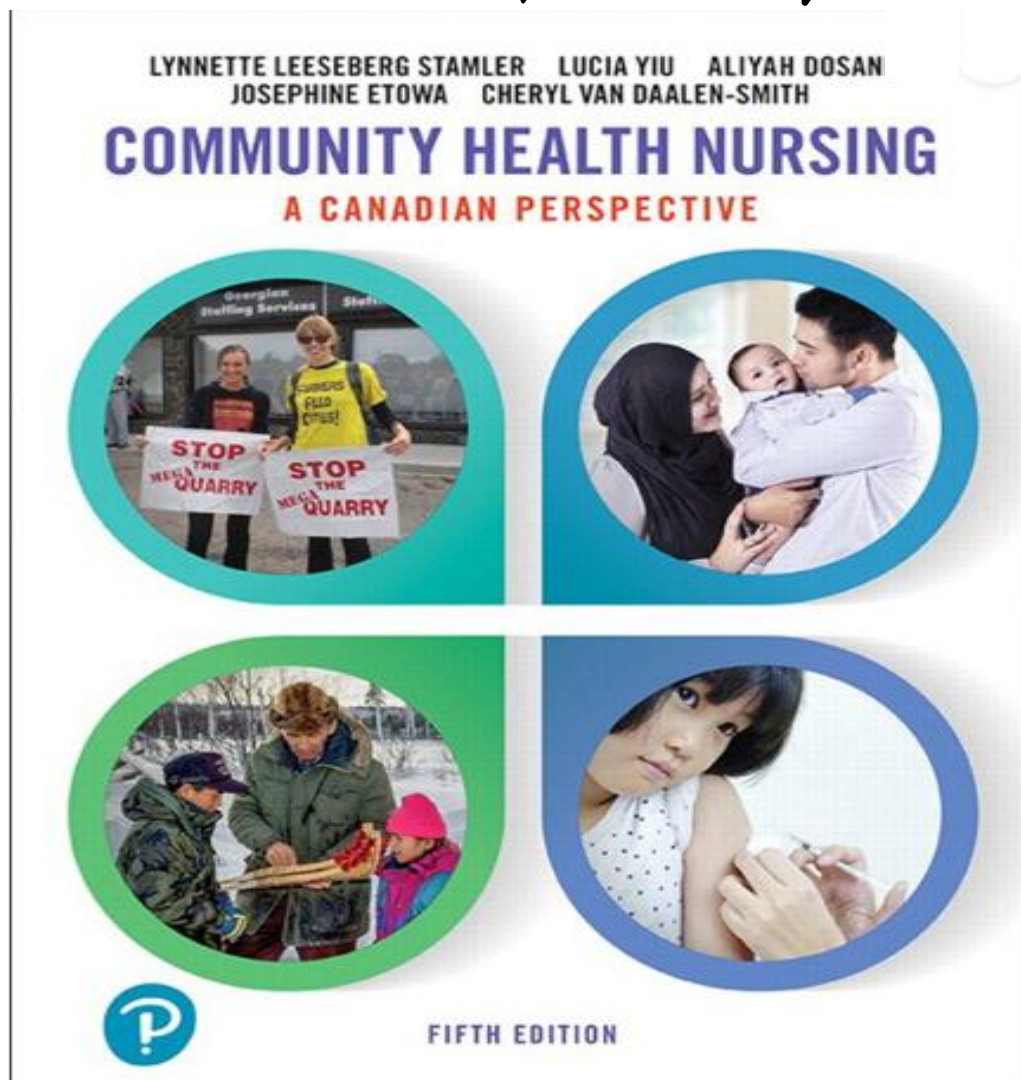


# TEST BANK

## COMMUNITY HEALTH NURSING: A CANADIAN PERSPECTIVE

*5th Edition, By Stamler, Yiu*



# TEST BANK

**Chapter 1: The History of Community Health Nursing in Canada**  
**Community Health Nursing A Canadian Perspective 5th Edition Stamler**

---

**Multiple Choice Questions**

1. Who would a visiting nurse most likely work with in the early 1900s in Canada?
  - a. Families who could afford to pay
  - b. Poor and destitute families
  - c. The community
  - d. School children

**Correct Answer: b (page 6)**

2. Which community health nursing specialty emerged in early 20th-century Canada to combat communicable disease, infant mortality, and childhood morbidity?
  - a. Visiting nursing
  - b. District nursing
  - c. Private duty nursing
  - d. Public health nursing

**Correct Answer: d (page 4)**

3. In the early 20th century, health departments were dissolved after a local emergency was over. Which statement below characterizes the social attitude of the era?
  - a. Public health was the responsibility of doctors
  - b. Visiting nurses were responsible for community health
  - c. The state was not responsible for health care
  - d. Women should not be working outside of the family

**Correct Answer: c (page 3)**

4. What was the primary reason for the establishment of school health programs?
- a. Prevent ill children from becoming dependent citizens
  - b. Promote the health of all children
  - c. Provide food for children who lived in poverty
  - d. Treat sick children so they could work and contribute to the family income

**Correct Answer: b (page 4)**

5. The earliest forms for healthcare in Canada were:
- a. The practices of Aboriginal people
  - b. European settlers who were physicians
  - c. The wives of surgeons
  - d. The Grey Nuns-first community nursing

**Correct Answer: a (page 2)**

6. \_\_\_\_\_ were Canada's first community nursing order who made significant contributions to providing access to health services, food, shelter, and education for the most vulnerable:
- a. The Victorian Order of Nurses
  - b. The Grey Nuns
  - c. Public Health Nurses
  - d. School Nurses
  - e. nursing sisters -first to provide health care in remote and frontier area)

**Correct Answer: b (page 3)**

7. The dual mandate of doing charitable work and providing affordable nursing care was held by which agency?
- a. The Margaret Scott Nursing Mission
  - b. The Victorian Order of Nurses-lady aberdeen led the development
  - c. Indian Health Services
  - d. Public Health Services

**Correct Answer: b (page 4)**

8. How were public health nurses and home visiting nurses different from nurses employed in other sectors of the healthcare system?
- a. They received less compensation for their services
  - b. They were dependent on other health care professionals
  - c. They required post-diploma training at a university
  - d. They offered services to the elite living in urban districts

**Correct Answer: c (page 4)**

9. Which of the following were the first two public health nursing specialties?
- a. TB nursing and school nursing
  - b. Private duty nursing and TB nursing
  - c. Home-visiting nursing and school nursing
  - d. Outpost nursing and school nursing

**Correct Answer: a (page 4)**

10. What was the role of the first public health nurses in Canada?
- a. To assess hygiene conditions in the home
  - b. To conduct well baby clinics
  - c. To promote breastfeeding of newborn infants
  - d. To promote health of school children

**Correct Answer: d (page 4)**

11. Which organization is credited for establishing well-baby clinics?
- a. The Grey Nuns
  - b. The Victorian Order of Nurses
  - c. The Red Cross
  - d. Provincial Health Departments

**Correct Answer: c (page 5)**

12. Why did public health programs have limited success in rural and isolated areas?
- There was a greater need for home care and midwifery
  - There were many physicians in the rural areas
  - There was higher need for health education and illness prevention
  - Local health departments were situated in rural areas

**Correct Answer: a (page 6)**

13. Which of the following roles best describes the work of the district and visiting nurse?
- They provided home visits and well-baby clinic services
  - They provided bed-side nursing and health education
  - They provided maternal child health programs
  - They provided well-baby clinic services and health education

**Correct Answer: b (page 6)**

14. How did publicly funded healthcare programs change the work of visiting nursing associations?
- The Victorian Order of Nurses took over public health programs
  - Visiting nurses provided care to those who could not afford it
  - Hospital admission became the norm for those requiring obstetrical care
  - Chronically ill individuals no longer remained in community settings

**Correct Answer: c (page 7)**

15. Military nursing requires the nurse to demonstrate which of the following competencies of community health nursing:
- A narrow vision
  - Acute care health approaches
  - The ability to adapt practice in diverse settings
  - The ethical comportment to address simple conflicts that involve violence

**Correct Answer: c (page 7)**

16. Which of the following types of community health nursing refers to nurses providing services in the most remote geographic locations?

- a. Visiting nursing
- b. Public health nursing
- c. Outpost nursing
- d. District nursing

**Correct Answer: c (page 7)**

17. Which group played an important role in developing the social and healthcare services in smaller communities?

- a. The Victorian Order of Nurses
- b. The politicians
- c. District and visiting nurses
- d. Women volunteers

**Correct Answer: d (page 5)**

18. What was the focus of the first group of public health officials in the early 20<sup>th</sup> century?

- a. Waste disposal and a safe water supply
- b. Health education and disease prevention
- c. Infant and child welfare
- d. Social welfare programs

**Correct Answer: c (page 5)**

19. Which of the following programs were taken over by the health department as part of the process of consolidating all public health programs?

- a. School health programs
- b. Social welfare programs
- c. Well-baby programs
- d. Home visiting programs

**Correct Answer: a (page 5)**

20. Which of the following organizations is viewed as Canada's oldest and most experienced visiting nursing organization?

- a. The Red Cross
- b. The Victorian Order of Nurses
- c. The Grey Nuns
- d. Provincial health departments

**Correct Answer: b (page 9)**

21. Early school-based initiatives involved which of the following activities?

- a. Immunizations at various ages
- b. Medical inspections of children followed by home visits
- c. Breakfast and lunch programs
- d. Sanitation and access to potable water

**Correct Answer: b (page 5)**

22. How did the reduction in government spending in the 1980s and 1990s affect community health nurses?

- a. Increased funding for physical infrastructure
- b. Re-institutionalization of mental health patients
- c. Improved capacity to follow-up with patients with communicable diseases
- d. Reduced nursing positions

**Correct Answer: d (page 10)**

23. In which year was the Community Health Nurses Association of Canada established?

- a. 1995
- b. 2000
- c. 1987
- d. 1976

**Correct Answer: c (page 11)**